



SY10U

Engine power
8.8kW/2200rpm

Bucket capacity
*0.025 m³

Operating weight
1195kg



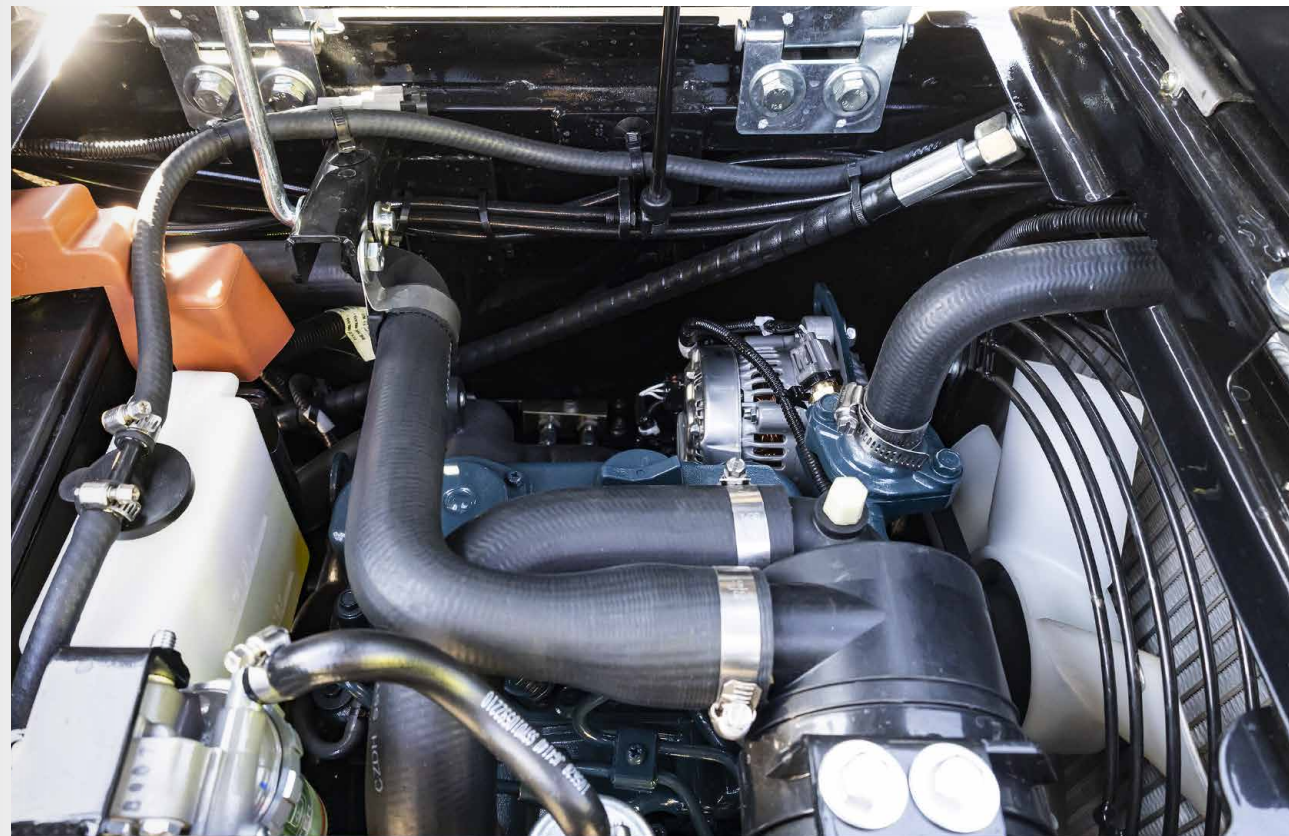
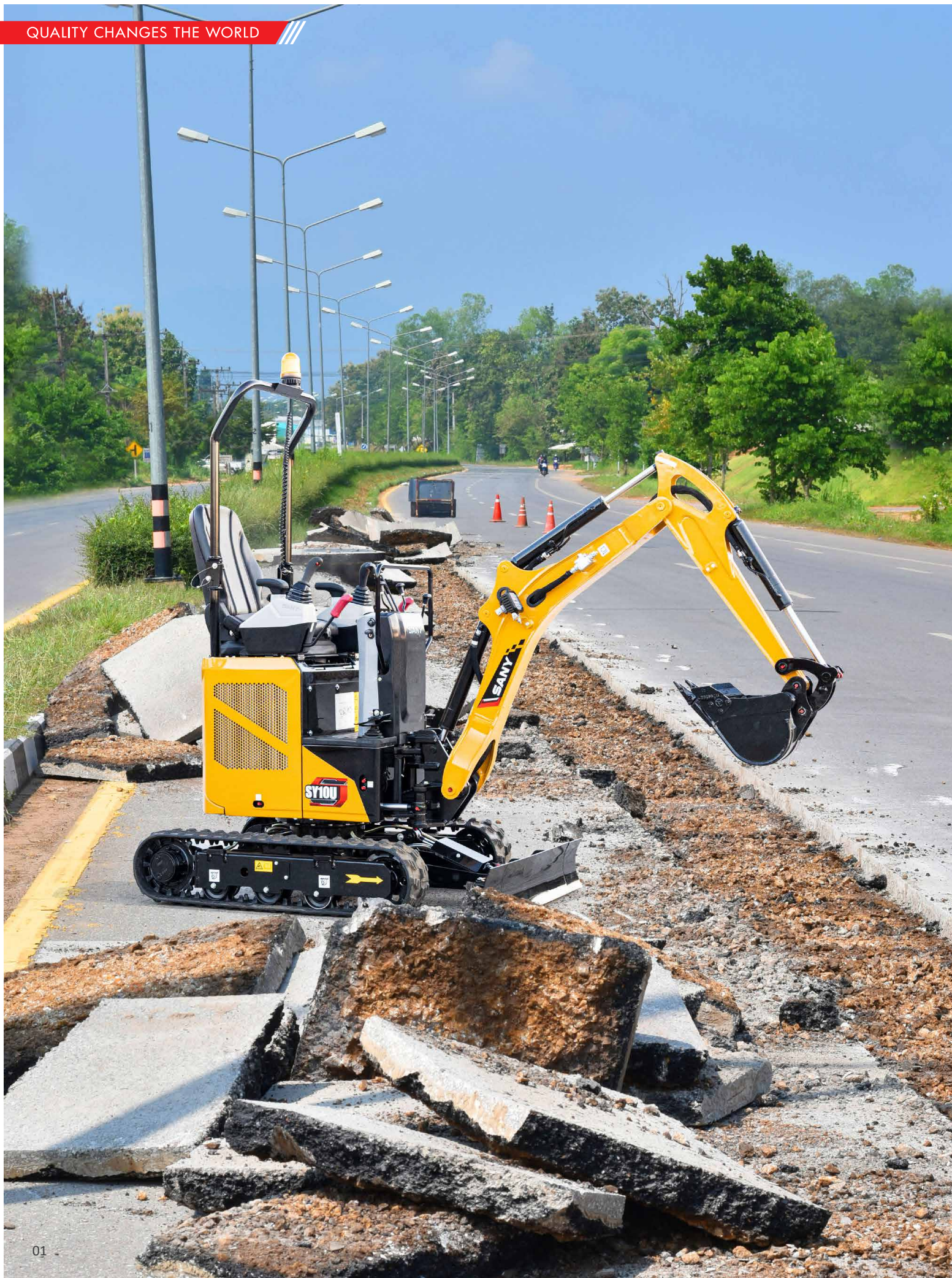
- High security
- Small and Flexible
- Easy Operation
- Comfortable Operation



SANY HEAVY MACHINERY LTD
<http://www.sanyglobal.com>

This manual was printed in 2025. The product information may have been changed when you read it. Products (including specific configuration, detail, etc.) are based on the specific models and products applicable to markets outside China, which are displayed and sold by agents. For more details, please visit the local authorized agent of SANY Heavy Machinery Ltd.

* Bucket is optional



Strong power

► SY10U uses SANY custom Kubota D722 engine, delivering 8.8kW of power and meeting Euro 5 emissions standards, strong power, With reliable and durable performance, it caters to the diversified power needs of customers.

► Hydraulic system adopts a high-torque main pump and a high-flow main valve to ensure high efficiency of excavation and crushing operation.

Load-sensing hydraulic system: It can provide and distribute flow according to the needs of the system for flow, to meet the requirements of actuator speed regulation and composite action. Through hydraulic system optimization, precise engine matching ensures accurate and smooth control of machine operations.

As precise as manual control but much quicker

Mini excavators in particular require high operational flexibility. In this regard, the SY10U is simply unbeatable. It also has a powerful hydraulic system that gives it the necessary power. Together with the precise response behaviour of the hydraulics and undercarriage, this makes it a perfect precision tool.

Load-sensing hydraulic system



Quality

Robust and durable – the most important protective elements and reinforcements as well as all cladding parts are made of high-quality metal, ideal for tough use in the construction industry.

Dimensions

Lightweight and compact – the SY10U fits easily onto standard car trailers and can be transported quickly to any location, even where space is tight.

User experience

Extremely comfortable – from easy access to the comfortable seat and the ergonomically designed controls, drivers can look forward to maximum comfort.



Safety

No compromise – the SY10U is fully equipped for precise, safe working even in very confined application conditions. In addition to the standard walking warning beacon, this also includes the battery disconnection switch and an emergency stop button.

Components

Quality as standard – the SY10U already comes with extensive features as standard. In addition, it features core components such as the engine and pumps from renowned brand manufacturers like Kubota.

Economy

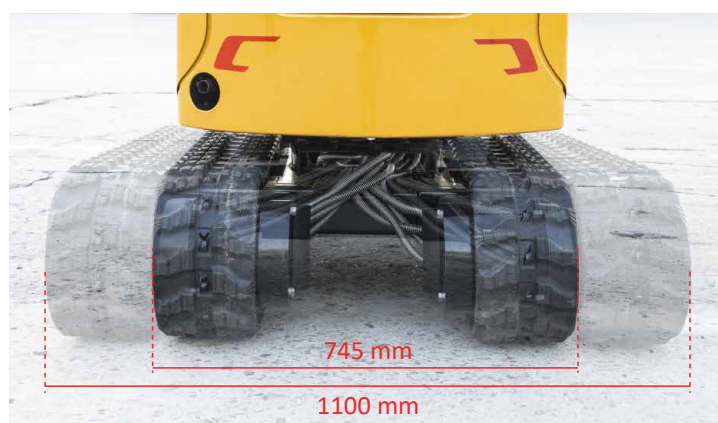
Economically impressive – low procurement cost, economical consumption in compliance with Euro 5 and straightforward maintenance which is attractive. When it comes to costs, SANY mini excavators really are mini.



Adjustable track frame to suit all your requirements and increase stability

When things get really tight, the SY10U makes itself very small – with a width of just 745 mm, it can even fit through a garden gate, a door opening or onto a trailer for transport.

If stability is required, the undercarriage can be hydraulically adjusted to a width of 1100 mm. The dozer blade can also be adjusted to varying widths as needed.



Safe enhanced cab canopy

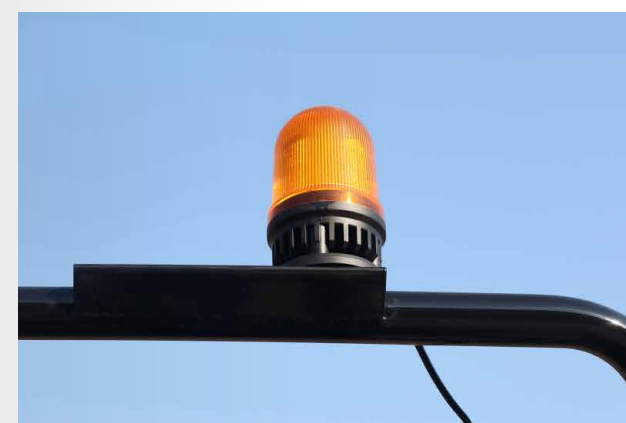
Brand new upgrade of cab

Protection for people and machines

Thanks to the ROPS or FOPS-tested operator's platform, SANY's smallest model also performs well in terms of safety. To ensure that people and machines, tools and buildings and the environment are optimally protected, the standard equipment includes a battery disconnection switch and an emergency stop button. The travel alarm helps the operator to pay attention to their work during operation.

The individual that already has everything

The SY10U comes with many standard features that are highly beneficial. For instance, it includes LED work lights that ensure optimal visibility in any condition. Additionally, it boasts a sophisticated load-sensing hydraulic system, which provides precise power adjustment to meet specific operational needs.





Everything perfectly under control

Precise handling, quick reactions, fatigue-free operation – the controls of the SY10U are designed for ergonomic handling. Designed for everyday use, all switches are easy to reach. Joysticks transmit movements directly and precisely. The digital display is clear and easy to read and shows the most important data at a glance. Using the small wheel in the joystick, the proportional function of the auxiliary control circuit can be easily controlled with the thumb.



Complete research & development and test system

SANY's has established a complete machine endurance test center with full functions. Each model of excavator must be subjected to over 2,000h field excavating test.

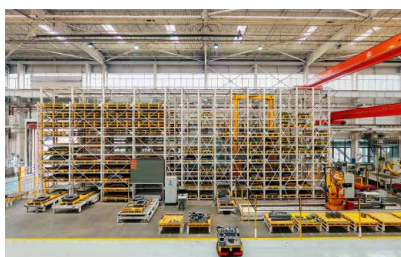
Key components like working device, cab and hydraulic components,etc. must be subject to fatigue test over 800,000 times.



Advanced manufacturing technology

SANY has an RGV assembling line and fullautomatic welding robots, and possesses highprecision machining equipment and a precise machining center.

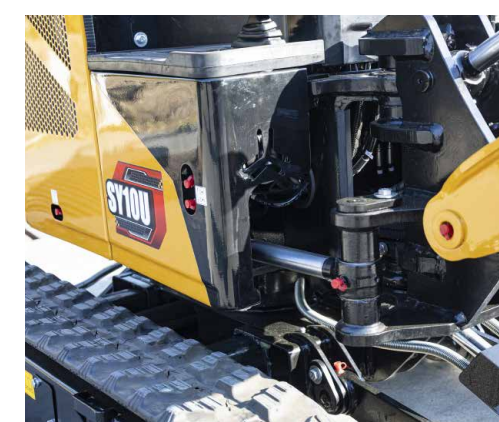
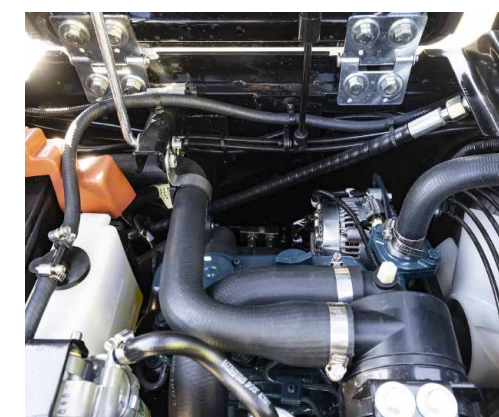
SANY's manufacturing and assembling lines won a five-star national site recognition in 2013 and national quality award in 2014. In 2023, SANY Mini Excavator Factory was awarded as the intelligent factory.



Convenient maintenance

Only a well maintained machine can do a good job. Therefore, all maintenance-relevant parts of the SY10U are easily accessible from ground level. This saves time and money during regular inspections and all maintenance work and increases availability.

The fuel tank is also easy to reach – but with a tank capacity of 13 litres and low fuel consumption, you do not need to refuel as often anyway.



Technical specifications

Specification		Main performance	
Operating weight	1195 kg	Traveling speed(high/low)	3.4/2.1 (km/h)
Bucket capacity	0.025 m³ (optional)	Gyraton speed	10rpm
Engine	Tier 4f/Stage V	Grade ability	30°
Modle	D722	Ground pressure	28.5kpa
Type	Water-cooled four-stroke diesel engine	Bucket digging force	12.9 kN
Engine power	8.8 kW/ 2200 rpm(SAEJ1995)	Arm crowd force	6.9 kN
Maximum torque	36.9 Nm/ 1900 rpm		
Displacement	0.719 L		

Service Refill Capacities		Traveling part	
Fuel Tank	13L	Carrier Roller of Each Side	/
Engine Coolant	3.5L	Supporting Wheel of Each Side	3
Engine Oil	3.8L	Standard Track	180mm
Drive (Per Side)	0.33L		
Hydraulic System	14L		
Hydraulic Oil Tank	11L		

Table of lifting capacity

SY10U											
blade up		1.5m		2.0m		2.5m		3.0m		Max	
		front	side	front	side	front	side	front	side	front	side
2.5m	kg									268	*286
2.0m	kg			*221	*221					171	187
1.5m	kg			238	*244	165	180			139	152
1.0m	kg	359	392	228	249	161	176			124	137
0.5m	kg			236	236	155	170			119	131
0	kg	313	346	206	227	151	166			121	133
-0.5m	kg	312	345	203	224	149	164			132	145
-1.0m	kg	316	349	205	225					160	*162

SY10U											
blade down		1.5m		2.0m		2.5m		3.0m		Max	
		front	side	front	side	front	side	front	side	front	side
2.5m	kg									*286	*286
2.0m	kg			*221	*221					*256	187
1.5m	kg			*244	*244	*245	180			*234	152
1.0m	kg	*429	392	*317	249	*260	176			*216	137
0.5m	kg			*373	236	*271	170			*200	131
0	kg	*545	346	*369	227	*260	166			*187	133
-0.5m	kg	*480	345	*322	224	*222	164			*174	145
-1.0m	kg	*371	349	*246	225					*162	*162

1. The lifting capacity is calculated in accordance with ISO10560 and SAEJ1097, where the limit coefficient of hydraulic system is 0.87 and tilting limit coefficient is 0.75;

2. Item with * is limited by hydraulic pressure and item without “*” is limited by stability;

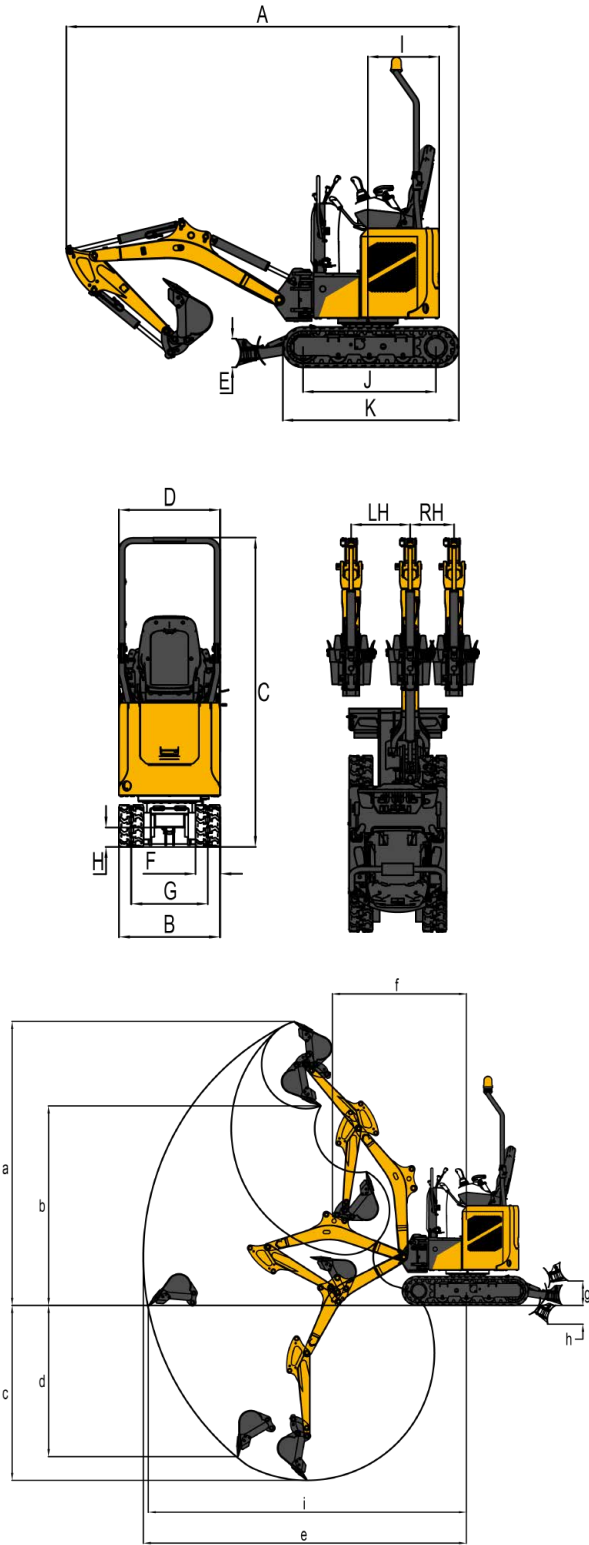
3. Lifting point is front support hole of arm (excluding the weight of the bucket). It is necessary to deduct from the above lifting capacity if additional accessory is installed, such as bucket;

4. Depending on the selected configuration, the machine weight and lifting capacity data will be different. Please refer to the actual configuration for details.

Machine dimensions

Overall dimensions(mm)	SY10U
A. Overall length(transportation)	3018
B. Overall width(transportation/operation)	745/1100
C. Overall height (transportation)	2290
D. Upper width	745
E. Blade height	220
F. Width of standard track shoe	180
G. Track gauge	564/919
H. Minimum ground clearance	145
I. Gyration radius of tail	550
J. Grounding length of track	1041
k. Track length	1353.5

Operation range (mm)	SY10U
a. Maximum digging height	3037
b. Maximum unloading height	2096
c. Maximum digging depth	1868
d. Maximum digging depth with vertical boom	1614
e. Maximum digging radius	3539
f. Minimum gyration radius	1487
g. Maximum lifting height of blade	260
h. Maximum lowering depth of blade	212
i. Maximum surface excavation radius	3490
LH/RH. Maximum bucket offset	451/335



Standard configuration

Engine	Canopy	Traveling body of undercarriage
D722	• ROPS canopy	• 180mm wide rubber track •
12V-40A alternator	• Extensible seat belt	• Foldable dozer blade •
Dry type dual-element air filter	• Adjustable seat	• Dual-speed traveling •
Cylinder-type engine oil filter	• Foot rest and floor mat	• Extensible undercarriage •
Cylinder-type fuel oil filter	• Expandable armrest box	•
Engine preheating	• Hydraulic system	
Engine oil cooler	• Pilot switch control rod	•
Fan aerofoil	• Single-way pipeline and double-way double-circuit auxiliary pipeline	•
Separately mounted engine	• Changeover valve for single-way pipeline and double-way double-circuit pipeline	•
13L plastic fuel tank	• Accumulator	•
	Hydraulic oil radiator	•
	11L hydraulic oil tank	•

Electrical control system	Optional devices
12V power socket	• Seat belt alarm light ○
Battery main switch	• Changeover between SAE/BHL modes ○
Boom headlights	• Alarm device •
Door maintenance switch	• Emergency stop device for engine ○

Front-end working device	
890mm arm	●
1460mm boom	●
Welded-type patented deflection joint	●

• stands for standard configurations ○ stands for optional configurations