



SS270V

Engine power
53.7 kW/2400 rpm

Bucket capacity
0.5 m³

Operating weight
4250kg

Rated load
1290kg



SANY HEAVY MACHINERY LTD
<http://www.sanyglobal.com>

This manual was printed in 2023. The product information may have been changed when you read it. Products (including specific configuration, detail, etc.) are based on the specific models and products applicable to markets outside China, which are displayed and sold by agents. For more details, please visit the local authorized agent of SANY Heavy Machinery Ltd.

SKID STEER LOADER

As a kind of compact earthmoving machinery, the skid steer loader is nimble and able to pivot 360 degrees in place by utilizing the speed difference between the two side wheels. Benefiting from the design of quick couplers, different attachments can be attached in minutes to meet various demands in general construction, agriculture, utility, and landscaping.

SS270V is a new masterpiece of SANY. Based on SANY excavator's mature R&D platform and rigorous testing system, its durability has been tested for more than 3000 hours. And it will have an awesome performance because of its following six highlights.



© Bulk Shovel Loading



© Site Cleaning



© Road Milling



© Material Handling

SIX HIGHLIGHTS



Comfort



Safety



Intelligence



Efficiency



Accessibility



Versatility





Ergonomic Joystick

Adjustable Air Outlet

Safety Armrest

Suspension Seat

Adjustable Air Outlet



Spacious cab

- The cab has an interior width of 950 mm, providing ample space and depth for a comfortable experience.

Low noise

- Adopting an integrated cab with good sealing.
- The temperature-control fan with large diameter can dissipate heat independently, making low noise.

Work with open front door

- It's accessible to work with open front door which can be flipped up to the top of the cab through an unique connecting rod mechanism.



Air conditioning system

- Integrated cooling and heating, powerful and comfortable.
- Wind speed and direction, foot blow and defrosting, adjustable as desired.

Touch display

- 7-inch LCD screen, anti-glare.
- Integrated with the control of equipment including rearview camera, air conditioning, radio, etc.



Ergonomic designs

- The safety armrest features a streamlined design and armrest function, providing a comfortable and fatigue-free support.
- The joystick, buttons, and scroll wheel are arranged according to ergonomics for comfortable operation.

Considerate designs

- Considerate designs such as 12V power socket, cup holder, storage bag, etc., for convenient use by the operator.



Multiple protection

- ◎ It's necessary to lower the safety armrest and unlock the one-click before operating the machine.
- ◎ Equipped with ROPS&FOPS cab, side window protection net, boom safety rod, and rotating warning light to ensure safety.
- ◎ Equipped with emergency unloading valve and escape window, practicing the concept of "life is the most important, and there is no price for life."



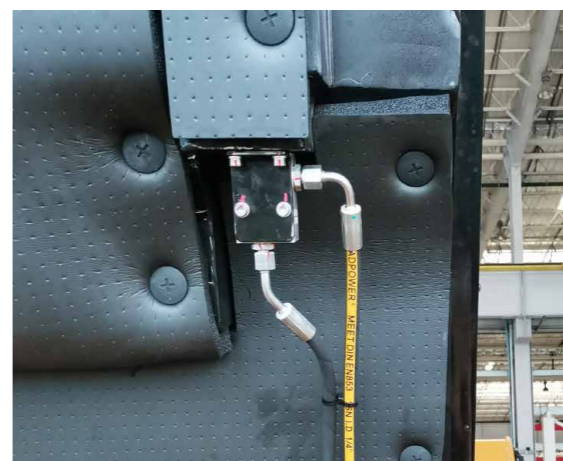
SAFETY ARMRESTS: The safety armrests must be lowered before any operation.



PROTECTIVE NET: It prevents personnel injuries caused by splashing or falling stones, etc.



ROTATING WARNING LIGHT: It always reminds people around to maintain a safe distance.



EMERGENCY UNLOADING: Lower the boom in emergency situations to ensure safety.



ESCAPE WINDOW: emergency exit.

Visibility

- © The reversing camera system and interior rearview mirror provide an ideal view behind the machine.
- © Panoramic view design for front and sides to minimize unnecessary obstruction.



Front view + rear view + reverse image + rearview mirror

Night lighting

- © The high-brightness LED lights are equipped at the front and rear. The combined tail light integrates lighting, warning and steering functions to ensure construction safety at night.





Smooth shoveling

- ◎ No spreading happens in shovel transport as for its configuration of ride control system and self-leveling system.

Precise control

- ◎ The response and micro-mobility are great because of the hydraulic pilot control.
- ◎ Adopting DA power distribution technology to prevent flameout intelligently.

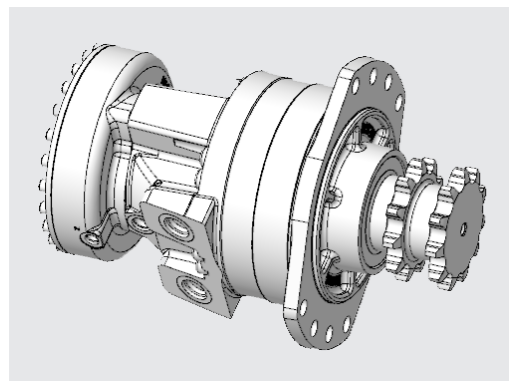
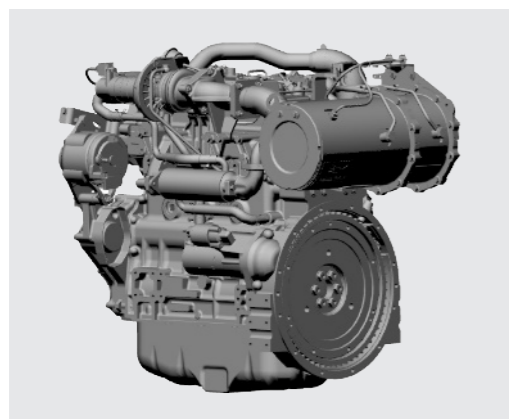
Intelligent Operation

- ◎ One-click startup is available to eliminate the trouble of carrying the key. And a password can be set to ensure the safety of your equipment.
- ◎ The maintenance reminders and fault alarms can be seen in the display by the transmission via CAN bus, allowing for real-time monitoring of machine status.



POWERFUL

- ◎ Both the power and traction are strong benefiting from its powerful YANMAR engine and a low-speed and high-torque motor.
- ◎ Based on its vertical lifting structure, large breakout force was achieved through the combination between the excellent point design and strong thrust cylinder.

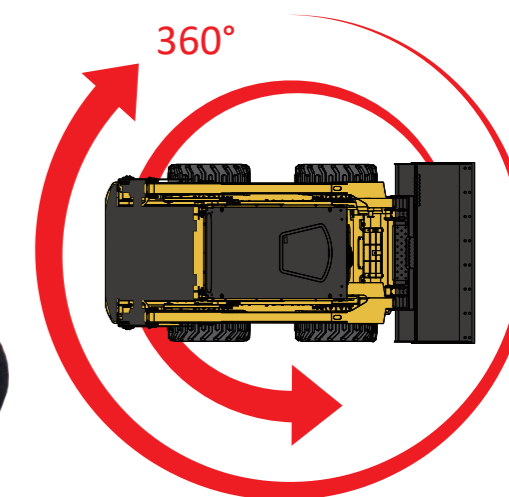


HIGH UNLOADING HEIGHT

- ◎ The maximum hinge height reaches 3,350 mm, making truck loading easier.

PIVOT 360 DEGREE IN PLACE

- ◎ It can pivot 360 degree in place benefiting from its compact structure, making it possible to work in confined spaces.



EFFICIENT

- ◎ Configured with dual speeds, with a maximum speed of 20 km/h, achieving efficient transfer.



MULTIFUNCTIONAL

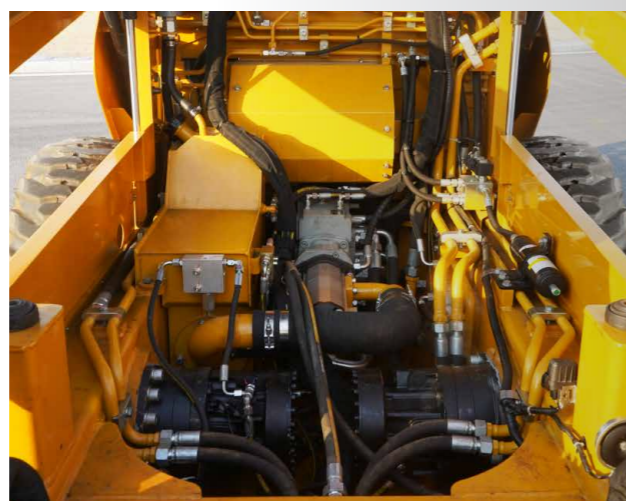


Versatility

Standard and high flows are available, making that various attachments can be used to meet different assignments, such as buckets, sweepers, snow blowers, cold planers, forks, forest mulchers, etc.

Spacious and accessible

- ◎ The tailgate can be opened fully, and the mesh cover can be flipped up, allowing for easy access to all parts from the ground during routine maintenance.
- ◎ The entire cab can be flipped backward, providing enough spaces for inspecting and repairing components such as pumps, motors, and valves, making maintenance convenient.



Bucket



Sweeper



Snow Blower



Cold Planer



Fork

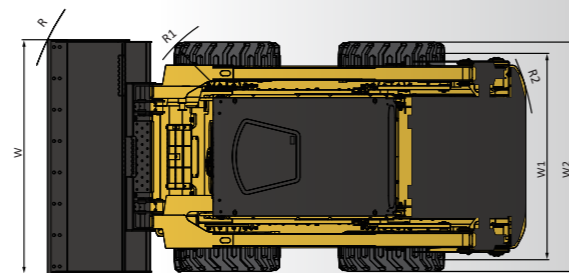
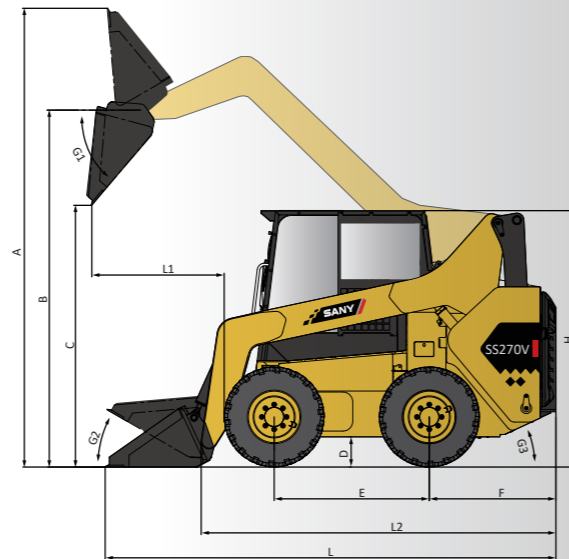


Forest Mulcher



Overall Dimensions

Overall dimensions (mm)	SS270V
A Maximum Overall Height	4200
B Bucket Pin Height at Maximum Lift	3350
C Clearance at Maximum Lift and Dump	2620
L1 Reach at Maximum Lift and Dump	985
D Ground Clearance	228
E Wheelbase	1300
F Bumper Overhang behind Rear Axle	1050
R Turning Radius from Center-Bucket	2230
R1 Turning Radius from Center-Coupler	1352
R2 Turning Radius from Center-Machine Rear	1733
G1 Maximum Dump Angle	43°
G2 Rollback Angle of Bucket on Ground	30°
G3 Departure Angle	25°
L2 Length without Bucket	2991
L Length with Bucket on Ground	3756
W1 Wheel Track	1485
W2 Over the Tire Width	1820
W Over the Bucket Width	1880
H Height to Top of Cab	2100



Technical Specifications

Performance

Rated Operating Capacity	1290 kg
Operating Weight	4300 kg
Bucket Capacity	0.5 m ³
Tipping Load	2580 kg
Breakout Force, Tilt Cylinder	28.8 kN
Breakout Force, Boom	25.5 kN
Lift Geometry	Vertical Lift
Travel Speed One	11.1 km/h
Travel Speed Two	20 km/h
Cycle Time (Raise/Lower/Dump)	9.3 s
Tire Size	12-16.5 14 PR

Hydraulic system

Loader Hydraulic Pressure	230 bar
Standard Hydraulic Flow	90 L/min
High Hydraulic Flow	125 L/min

Power system

Engine Model	YANMAR 4TNV98CT
Engine Speed	2400 rpm
Rated Power	53.7 kW
Peak Torque	280N.m @1560rpm
Displacement	3.3 L
Bore x Stroke	φ98X110 mm
Aspiration	Turbo-charger
Emissions	Tier 4 Final/Stage

Capacity

Battery Capacity	140 Ah
Hydraulic Tank	39 L
Engine Oil	9.4 L
Cooling System	12 L
Chain Box, Each Side	9.5 Lx2
Diesel Tank	100 L

STANDARD CONFIGURATIONS

Electrical system	Cabin
Backup Alarm •	ROPS/FOPS Cab, Tilt Up •
Heavy Duty Battery, 950 CCA •	Emergency Exit •
LED Front and Rear Lights •	Fully Automatic Air Conditioning •
One-click Startup •	Mechanical Suspension Seat •
7-inch Touch Screen •	Rearview Mirror •
Rearview Camera System •	Retractable Safety Belt •
12 volt Electric Socket •	Safety Armrest •
USB Power Port •	Hydraulic system
14-pin Electric Socket •	Multi-function Joystick •
Electrical Outlet, Beacon •	ISO Pilot Control •
Audio System •	Two-speed Travel •
Pedal Throttle Control •	Bucket Self-leveling System •
Radio •	Hydraulic Quick Coupler •
Bluetooth •	High Hydraulic Flow •
	Boom Damping System •

Optional configurations

Cabin	Others
Air Suspension Seat ○	Solid Tires ○
	Assembled Blade Plate ○
	Bucket Teeth ○

• indicates standard configuration ○ indicates optional configuration



