

More features, more possibilities

All SANY telehandlers are comprehensively equipped as standard. With numerous options and attachments, they can be individually configured as necessary – leaving them perfectly equipped for their respective requirements.

Other than attachment or special options the below is standard specification



OPERATING COMFORT/CAB

- Ten-inch touchscreen display and encoder navigation
- Air conditioning*
- Radio with Bluetooth and microphone
- Adjustable seat with suspension
- 12V power socket
- Sunblind, roof and front screen
- Heated rear screen
- Front, roof and rear wiper and washers
- Armrest with storage and USB charger
- Cup and bottle holders
- Fully adjustable steering column
- Intuitive keypad functions (all backlit)
- Telematics

SAFETY

- CE / UKCA-certified
- ROPS ISO:3471:2008 and FOPS ISO:3449:2005
- Reversing alarm
- Hi-viz seatbelt
- Integrated reversing camera and distance sensor
- Seat switch and green 'ready' beacon
- Load weight monitoring
- Load moment indicator display

WORK EQUIPMENT

- Standard SANY fast fit carriage with 1200mm forks
- Manitou carriage with fork frame (optional)
- Three steering modes: 4WS, 2WS and crab
- Chassis levelling +/-9 degrees (STH1440 & STH1840)
- Fully proportional joystick
- Auxiliary hydraulic venting from cab

WORKING LIGHTS LED

- Working lights on cab and boom
- Full road lights



Absolute reliability – for peace of mind!

SANY has earned a reputation worldwide for reliability, durability and performance but to provide peace of mind and to ensure maximum uptime all SANY telehandlers are backed by a SANY 3 year warranty**

** Terms and conditions apply. Check with your local dealer for more information.

*The air-conditioning system contains fluorinated greenhouse gases: Refrigerant type: HFC 134a, global warming potential: 1430, quantity: 65 kg, CO2e: 0.933 tonnes.

ATTACHMENTS

GENERAL PURPOSE BUCKET

For transporting loose and bulk material with a bucket capacity of 1 m³.



HYDRAULIC FORK POSITIONERS

Control your forks widths from your fingertips, saving time when changing loads and eliminates leaving the cab.

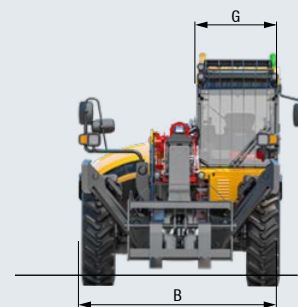
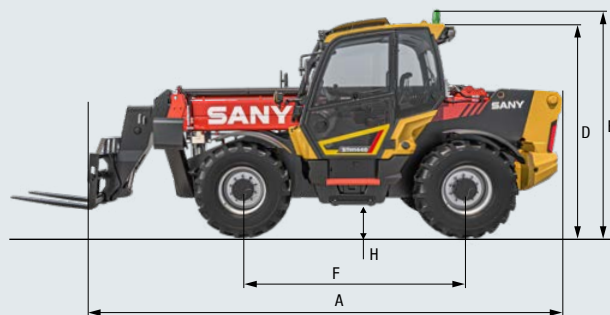
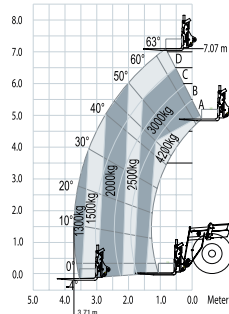


4,000 KG CRANE HOOK

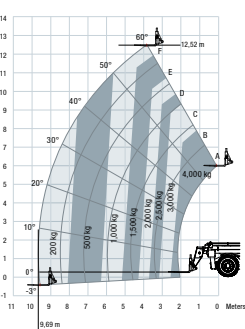
Can be easily fitted to SANY's Fast Fit Carriage for suspended loads when handling slung material. (Included as standard on STH1440 & STH1840)



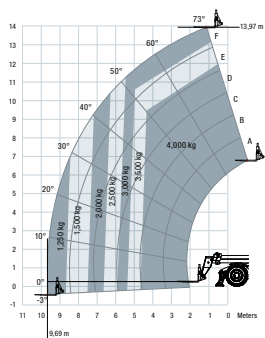
STH742



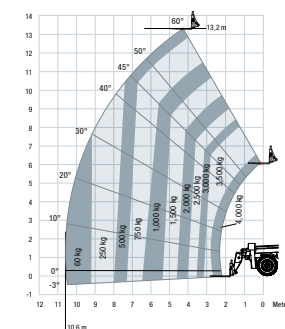
STH1440 – OUTRIGGERS UP



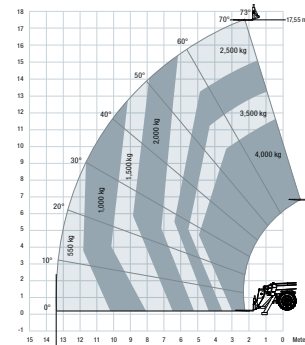
STH1440 – OUTRIGGERS DOWN



STH1840 – OUTRIGGERS UP



STH1840 – OUTRIGGERS DOWN



STH742

STH1440

STH1840

OPERATING WEIGHT

	kg	8,325	10,980	12,300
--	----	-------	--------	--------

PERFORMANCE PARAMETERS

Maximum lift capacity	kg	4,200	4,000	4,000
Lift capacity at maximum height	kg	2,500	3,000	2,500
Lift capacity at maximum reach	kg	1,300	1,250	550
Lift height	mm	7,070	13,970	17,550
Carriage crowd angle	°	45	37	37
Carriage dump angle	°	21	13	13
Frame levelling +/-	°	NA	9	9
Outside turning radius (4WS)	mm	3,850	3,850	3,850
Auxiliary hydraulic flow	l/min	60	60	60
Auxiliary hydraulic pressure	MPa	30	28	28
Noise at driving position (55 kW)	Lpa	75	75	75
Noise to environment (55 kW)	Lwa	105	105	105

BOOM PARAMETERS

Boom (raise/lower)	sec	8/6	18/13	15/12
Boom (extend/retract)	sec	6.5/4.5	15/13	16/19

TYRES

Type/size		460/70R24	400/80-24	400/80-24
-----------	--	-----------	-----------	-----------

DIMENSIONS

A Length to front of carriage	mm	4,990	6,160	6,200
B Overall width	mm	2,350	2,420	2,420
C Overall width stabilisers fully deployed	mm	NA	2,570	3,400
D Height over cab without beacon	mm	2,540	2,590	2,590
E Height over cab with beacon	mm	2,665	2,750	2,750
F Wheelbase	mm	2,750	2,750	2,750
G Overall cabin width	mm	950	950	950
H Ground clearance	mm	400	370	370

ENGINE

Engine brand	Deutz	Deutz	Deutz
Engine emission	Stage v	Stage v	Stage v
Engine model	TD 3.6L	TD 3.6L	TD 3.6L

TRANSMISSION

Transmission type		Hydrostatic	Hydrostatic	Hydrostatic
Transmission brand		Dana	Dana	Dana
Max. travel speed	kph	30	27	27

BRAKING

Parking brake	SAHR	SAHR	SAHR
Service brake	Oil-immersed multi-discs braking on front & rear axle		

HYDRAULICS SYSTEM

Hydraulic pump type		Gear with priority valve		
System pressure	bar	300	280	280
Hydraulic flow	l/min	95	100	100

CABIN

Cabin is ROPS & FOPS tested & conforms to IOS 3471/3449