



SY215C NLC **PB**

Engine power

129KW/2200rpm

Operating weight

24000kg



Strong motivation



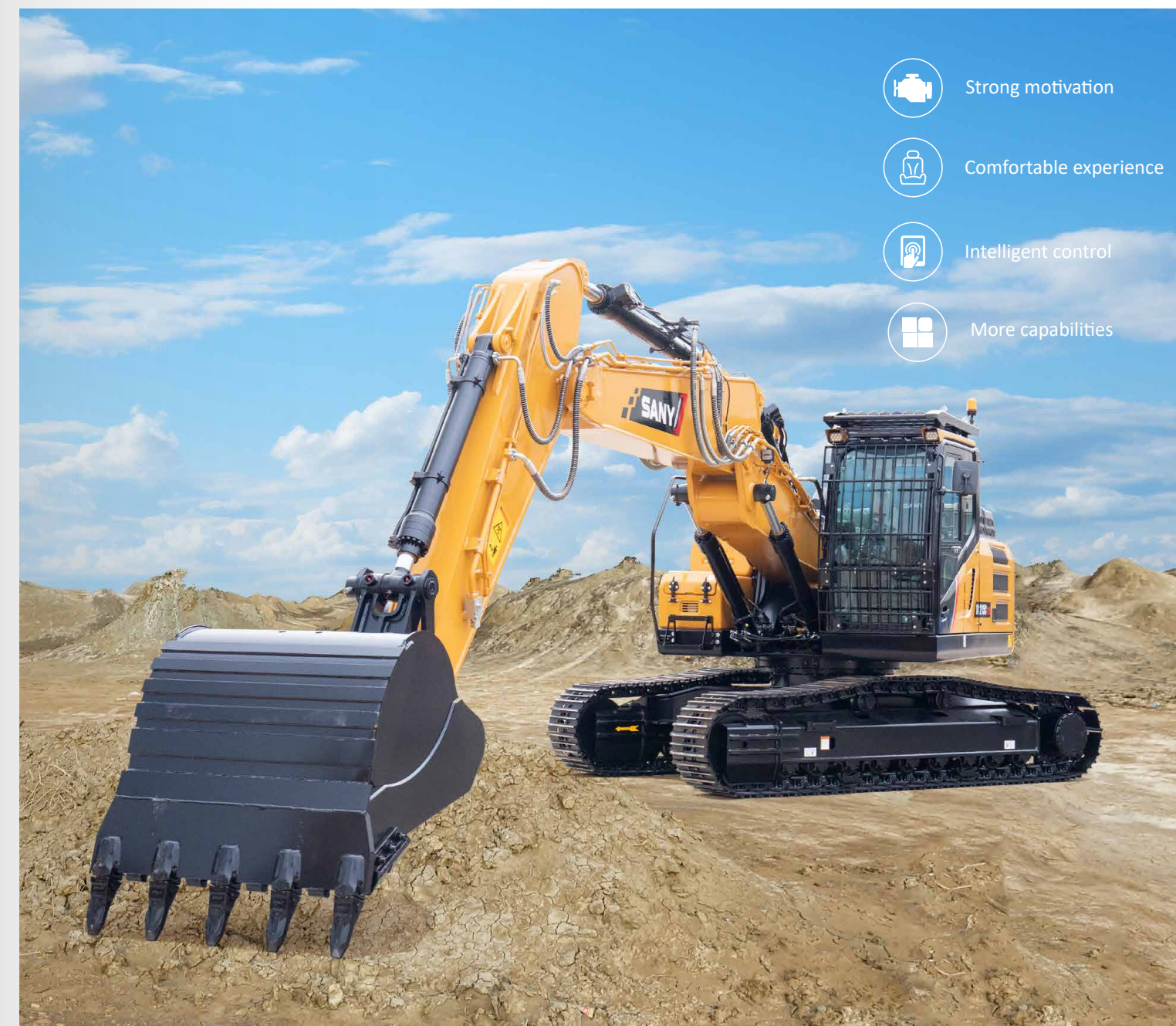
Comfortable experience



Intelligent control



More capabilities



SANY HEAVY MACHINERY LTD

<http://www.sanyglobal.com>

This manual was printed in 2024. The product information may have been changed when you read it. Products (including specific configuration, detail, etc.) are based on the specific models and products applicable to markets outside China, which are displayed and sold by agents. For more details, please visit the local authorized agent of SANY Heavy Machinery Ltd.

Offer more alternatives

This machine boasts a larger working range and more maneuverable swing radius, complemented by a selection of auxiliary tools and control methods to meet the diverse needs of users.

Strong motivation

SANY's automation control tech balances pump and engine as active loads with dynamic and static optimization.

Comfortable experience

With a multi-function display and one-button start, along with function buttons, the operation becomes more user-friendly.

Intelligent control

Different working tools can be set up, with the versatile handle making work effortless.

More capabilities

The double-jointed arm allowed for a 15% extension in operating range and a 25% reduction in turning radius.

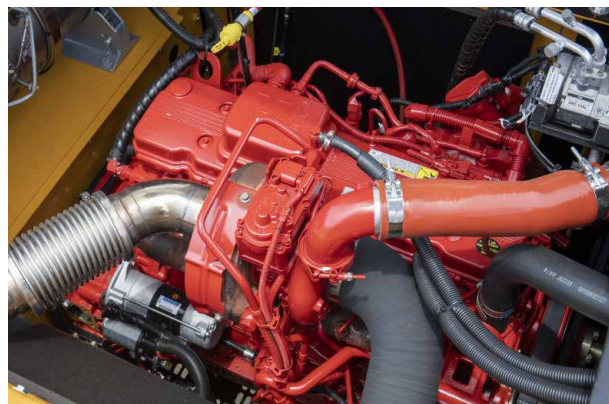
Strong motivation

The automation control technology developed by SANY integrates dynamic optimization and static optimization to perfectly balance the pump and engine as active loads.

By utilizing top-of-the-line engines and hydraulic systems, there is an 8% decrease in fuel consumption and a 4% improvement in efficiency.

01 Engine

The highly efficient engine with common rail technology guarantees excellent performance. Four different operating modes for the various operating conditions precisely adjust the engine and hydraulic power to the requirements. This improves the excavator's response behaviour and ensures lower fuel consumption and reduced emissions.



Engine model: QSB6.7
Engine power: 129KW/2200rpm
Displacement: 6.7 L

02 Main valve

The designation is according to the needs of customers, which has "high reliability, small pressure loss, high flow distribution efficiency, smooth compound action" and other outstanding advantages, to help customers easily solve heavy work.



Main valve model: KMX15RB
Rated flow: 300 L/min
Rated pressure: 37.7 MPa

03 Main pump

The position controlled hydraulic system adjusts the required pressure and oil quantity according to requirements. The powerful, variable piston pumps reach a flow rate of 2 x 222 l/min and therefore achieve a very high level of efficiency at a low engine speed.



Main pump model: K7V125D
Displacement: 2X130 CC
Maximum flow: 2X273 L/min
Rated pressure: 34.3 MPa



Comfortable experience

The cab has undergone upgrades to ensure compliance with ROPS& FOPS standards, along with significant improvements in safety, sealing, and comfort.

01 Large display

The 10.4-inch capacitive touch screen and high-speed dual-core processor combine to deliver a fluid experience.

02 Easy operation

Start with just one button, control multiple functions with a single panel for improved convenience.

01 Enable display in multiple languages

There are 16 national languages available for selecting the display language, accommodating different regions.

03 Enlarged seat

The seating area has been expanded to accommodate the human body's curves.

01 Multi-function display

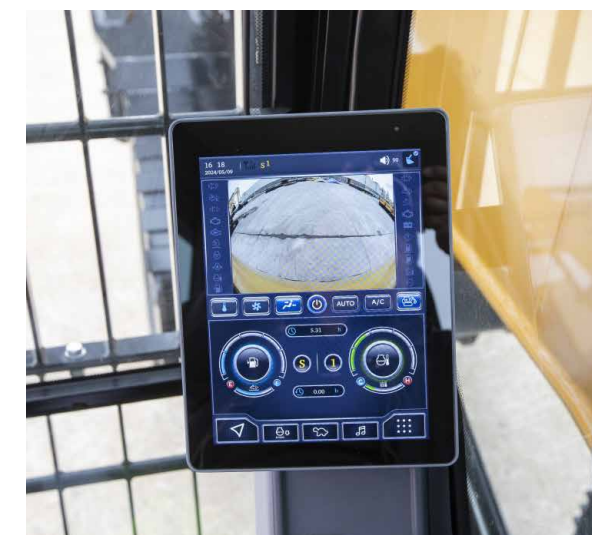
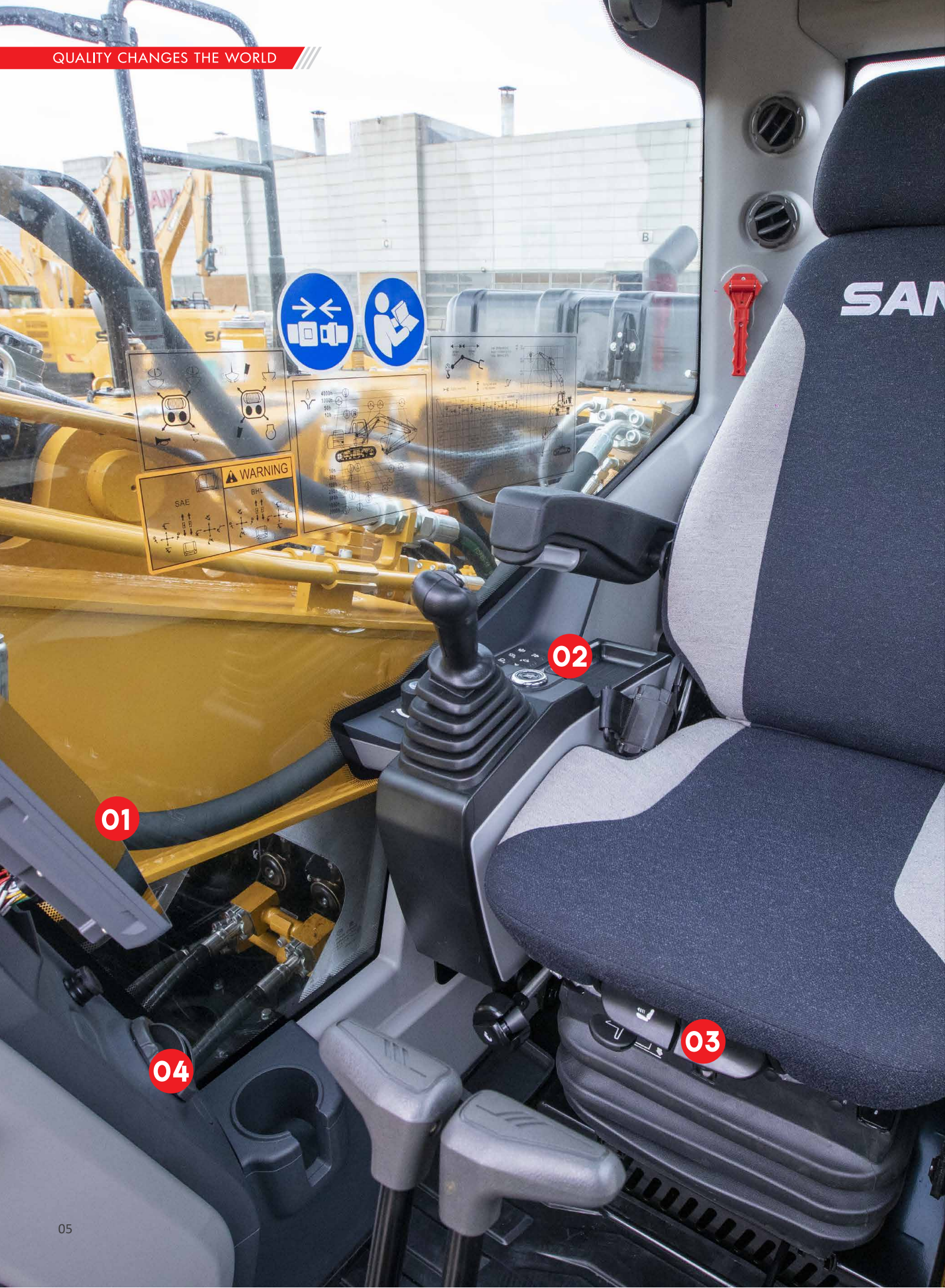
Display includes Bluetooth, WIFI, phone, radio, and AC controls. Also shows front and rear camera images.

03 Heated seat

Stay warm and cozy during the cold winter months with the seat's 24V heating feature for a comfortable working environment.

04 Automatic regulation of air conditioning

Just set the temperature on the air conditioner and its automatic mode will ensure a comfortable temperature in the cab without any further adjustments needed.



Intelligent control

Interface for displaying multiple information

The new display screen serves as an interface that allows users to check equipment information like fuel level and battery status whenever needed, providing real-time updates on equipment status.

Multi-function handle

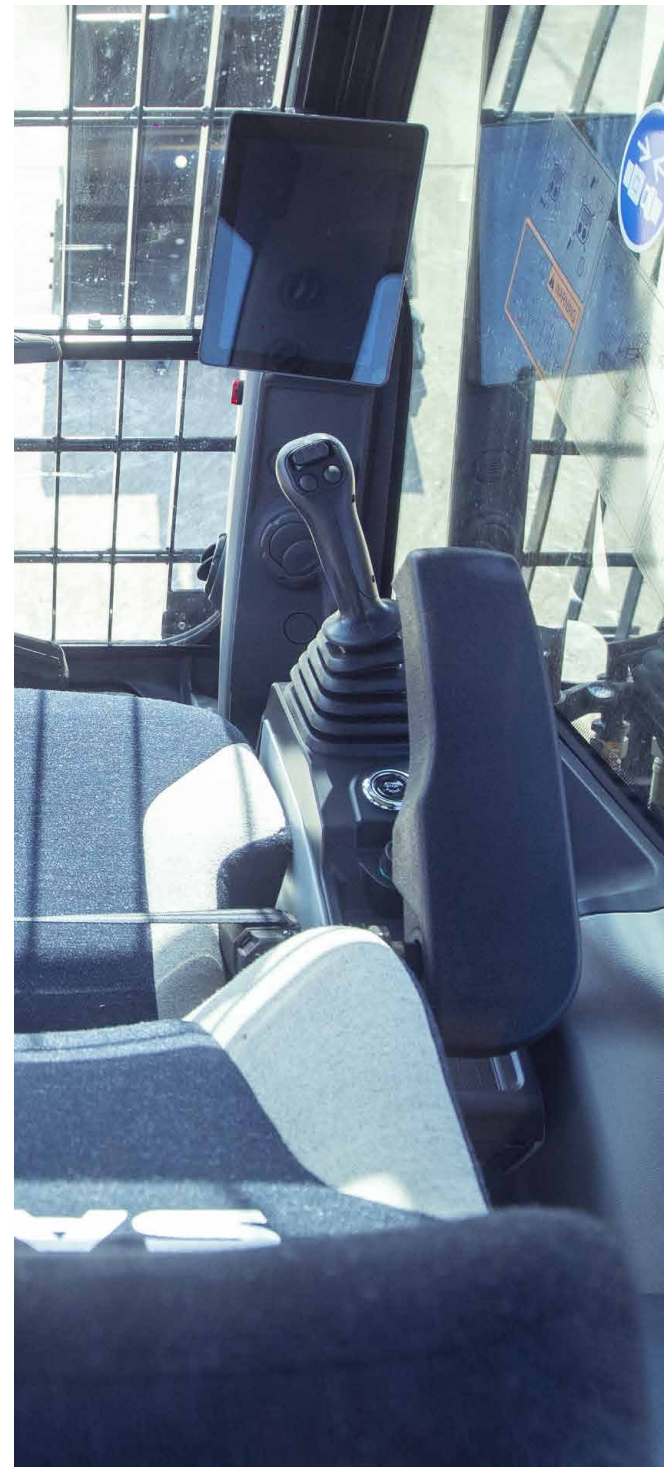
With a multi-function handle that combines 6 functions like hydraulic shear rotation, opening and closing, setting idle speed with a single button, and whistle, the operation becomes more convenient.

One key for controlling idle speed

Select either automatic or manual idle in the display screen, and switch the idle mode on and off using the right handle for more fuel-efficient performance.

Prompt fault detection

Through a single click on the main interface of the display screen, users can retrieve fault codes, facilitating the acquisition of precise maintenance reference information and boosting maintenance efficiency.



More choices

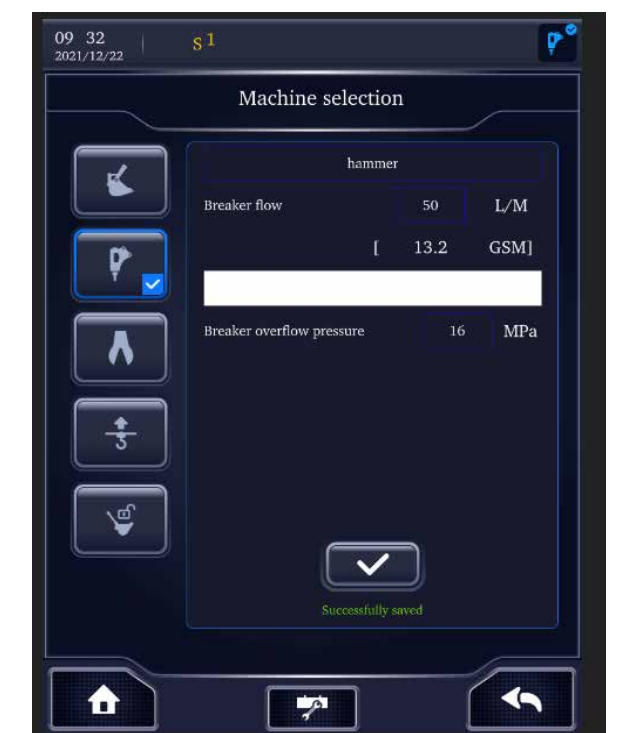
Double-jointed arm

Users can achieve efficient operations with the double-jointed arm that supports a maximum excavation distance of up to 10 meters.

Auxiliary hydraulic line

Featuring dual auxiliary pipelines and interchangeable pipelines, this equipment can be matched with different work attachments, with the ability to adjust the flow and pressure of the attachments.

supported attachment: type thumbs/grapples/hammers/shears/
multi-processors/pulverizers/couplers



More capabilities

Command

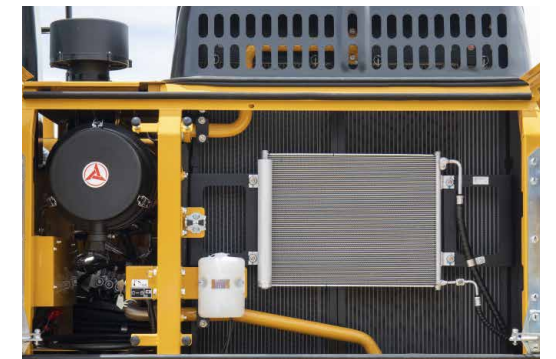
The operating handle reduced the operating blind area by 8.8% , and the operating force decreased by 35.7%.

Safety

CE certified with safety enhancements like full protection net and warning lights. Cab passed FOPS&ROPS performance testing certification successfully.

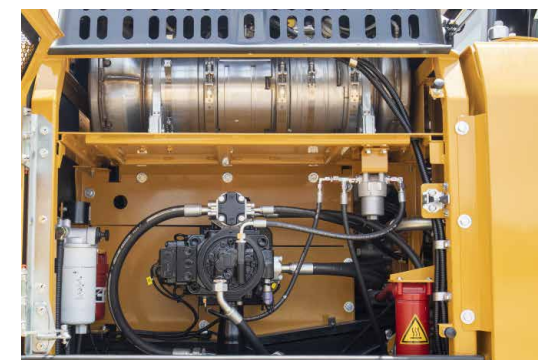
Minimal sound

By employing the clutch fan, a 5dB noise reduction and 3% decrease in fuel consumption are attained.



Stable

Core components are safeguarded by the side door's double-layer panel construction.



Upkeep

Conveniently situated at the front of the excavator, the fuel filling pump and urea filling tank aid in facilitating scheduled maintenance.



Safety

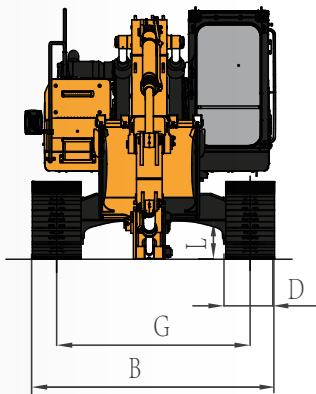
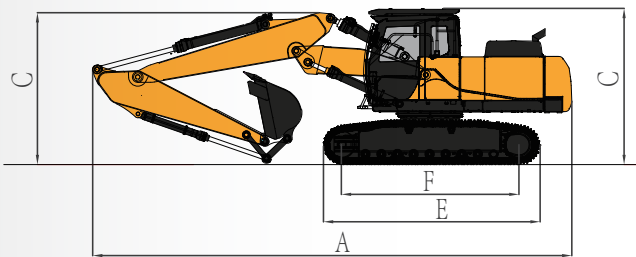
Tail and side cameras enable continuous monitoring of the work environment, enhancing operational safety, along with safety alarm lights and emergency shut-down switches.



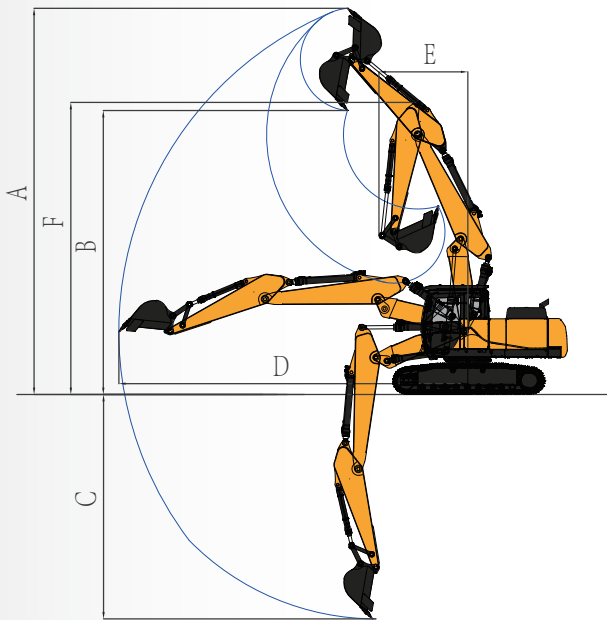
Technical specifications

Specification		Performance	
Operating weight	24000 kg	Traveling speed (high/low)	5.6/3.4 (km/h)
Mode	QSB6.7	Swing speed	11 rpm
Engine standard	Stage V	Gradeability	70%(35°)
Type	Water-cooled, 6 cylinder, with commonrail and adblue	Ground pressure	47.4 kPa
Engine power	129 KW/2200 rpm	Bucket digging force	133 kN
Maximum torque	732 Nm/1500 rpm	Arm crowd force	117 kN
Displacement	6.7 L	Upper boom length	3.3 m
Batteries	2X12V	Lower boom length	2.7 m
		Traction force	191 kN
		Counterweight	4600kg

Machine dimensions



Overall dimensions (mm) SY215C NLC PB	
A. Overall length (transport)	9820
B. Overall width (transport)	2540
C. Overall height (transport)	3300
D. Standard track plate width	500
E. Track length	4445
F. Track length on ground	3640
G. Track center distance	2040
H. Min. ground clearance	468



Operation range (mm) SY215C NLC PB	
A. Max. digging height	11050
B. Max. unloading height	8110
C. Max. digging depth	6140
D. Max. digging reach	9825/9650(Ground)
E. Min. swing radius	2593
F. Max. height at min.swing radius	8532

