



SY26C

Engine power
14.6kW/2400rpm

Bucket capacity
*0.07m³

Operating weight
2775kg



* Bucket is optional



SANY HEAVY MACHINERY LTD
<http://www.sanyglobal.com>

This manual was printed in 2023. The product information may have been changed when you read it. Products (including specific configuration, detail, etc.) are based on the specific models and products applicable to markets outside China, which are displayed and sold by agents. For more details, please visit the local authorized agent of SANY Heavy Machinery Ltd.

The power to get the job done right

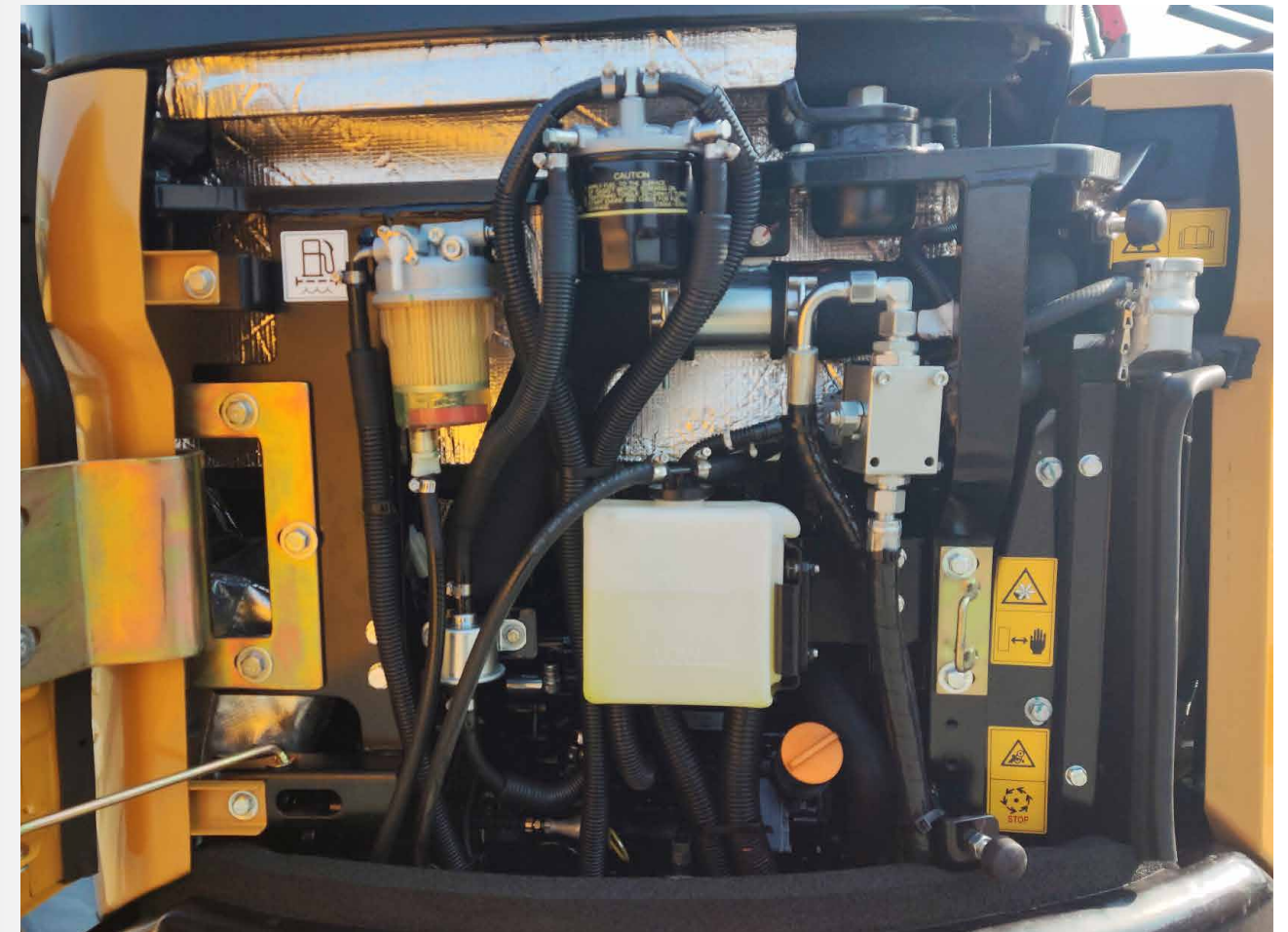
The SY26C is equipped with a YANMAR 3TNV80F 1.267 liter Stage V engine delivering 14.6kW/2400rpm. Matching engine output to the highest quality hydraulic components allows the independent systems to act as one and maximize fuel efficiency and machine performance.



▶ Utilizing high-quality engines and hydraulic components, the SY26C performs at the peak of efficiency. The machine has a highly engineered hydraulic system that reduces fuel consumption and provides an efficient balance of the main pump and engine power.

▶ The cooling system is sized to match the cooling requirements to the power needs of the most demanding operating conditions. It offers an optimized fan drive coupled with a side-by-side cooler to provide the necessary cooling for the engine and hydraulics.

▶ Spin-on fuel water separator, oil filter and dual-element air filtration are standard and easily serviceable.



Radiator with protective net



Engine fuel filter



Fuel water separator



2 stage air filtering system



Operator comfort to maximize your productivity

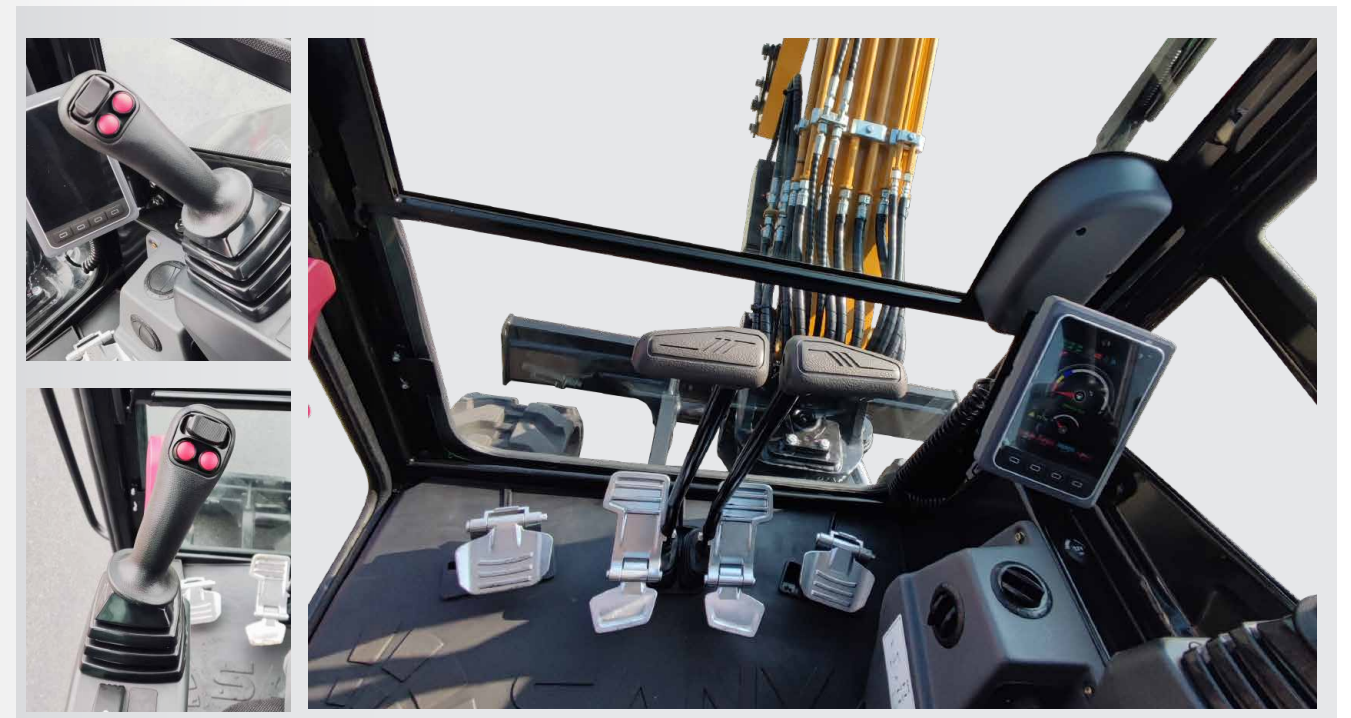
Any person in any job performs better when provided with suitable working conditions. The SY26C cab provides just such an environment for operators. Our design, which places operator comfort center stage, ensures that the focus remains on the job during the workday.

Comfort and control come standard

SANY's optimized operator cab provides all-around visibility and is designed to support the operator's natural range of motion. Spacious foot room and an adjustable seat provide an excellent working environment for increased productivity. Spacious, ergonomically designed workstation crafted with every operator need in mind. Quiet operation. Exceptional operator visibility.

Low-effort control levers. Using the slide button of left joystic to control the deflection movement of the boom. Meet rental user requests by developing a PIN CODE boot password system capable of accommodating 20 sets of passwords for streamlined rental management.

Comfortable operator's seat. The hydraulic-over-hydraulic pilot system provides smooth feel and precise control.



Hydraulic excavator SY26C hydraulics

With a finely tuned hydraulic system, the SY26C provides a real-time match of flow to the demand and engine power available. You can be certain that the machine will operate at the peak of efficiency.

Hydraulic features

Excellent feathering-touch with work tools and fine grading through a load-sensitive hydraulic system. Precise control in lifting applications. Smooth use of power during digging. High gyration torque reduction provides high gyration speed and precise movements of the upper structure.

The high output variable displacement axial piston pump delivers a flow rate of 78L/min to provide the hydraulic horsepower necessary to get the work done.



Additional hydraulic function is the new standard

Responsive two-way auxiliary hydraulics are standard, providing full power for high productivity and precise control. The end is equipped with a ball valve to facilitate the connection of the fittings.

Optimize the layout of the quick-coupler pipeline, integrate a transition block, and ensure seamless and convenient connection of the quick-coupler pipeline.

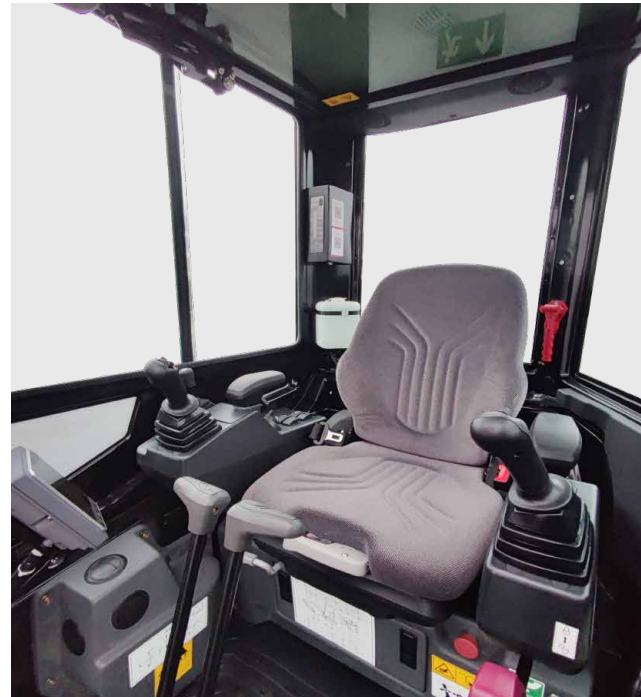


Designed to maximize your protection

SANY excavators are designed around safe operation and maintenance of the machine. The design of the cab entrance allows for easy entry into and exit from the machine, with strategically placed railings for convenient access to the cab. The comfortable operator compartment allows the operator to be positioned so that he can control the machine effectively and safely. The display , with strategically placed railings for convenient access to the cab.



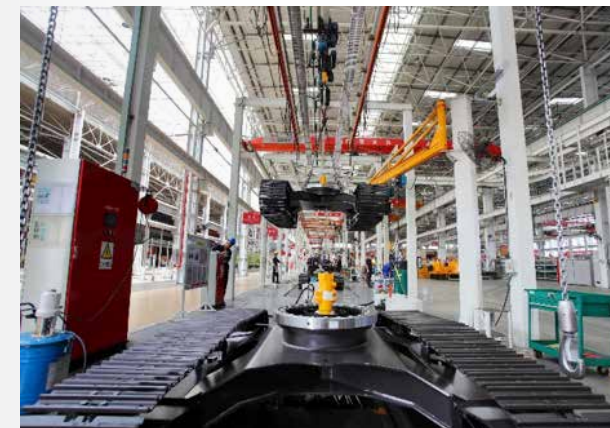
Quiet operation is key to long hours of work. The SY26C is equipped with a quiet cab environment to ensure that operators can work all day every day they are in the machine. The machines are equipped with standard emergency stop switches as well as other features to aid operators in safe and efficient operation of the machine. The responsive low-effort hydraulic controls ensure the machine responds to the operator's demands in the most smooth and consistent way.



A battery disconnect allows you to disconnect the machine from the main battery power supply when maintaining or storing the machine. The SY26C is designed to aid in smooth and safe operation and maintenance.

Quality is not a goal, it's our commitment.

The structural components and work equipment of the SY26C are robustly built with SANY's strong design, meaning that the fabrications are designed taking into account the most difficult and demanding operator needs and jobsite requirements.



Extensive testing and analysis ensure the structures will have the durability expected and that we deliver a machine that is ready for work in even the most demanding of environments. With the emphasis on reducing stress points, both the boom and arm go through rigorous fatigue and field testing.

Because SANY is one of the world's largest manufacturers of hydraulic excavators, you can be sure that our machines have been exposed to a variety of applications. At SANY, our excavators have encountered various challenges, and have had advancements made to be prepared for any job required.



Our reliability stacks up against any competition. Productivity allows more work to get done with less operating cost.

The highest quality suppliers and components are designed to function together as one unit. Integrating these quality components together results in reduced machine downtime, adding significant value to your bottom line.



Performance to fit any application

The SANY SY26C excavator is designed to help you work efficiently while maximizing your jobsite productivity. It has many features to help operators achieve the balance of power, smoothness, fuel efficiency and speed.

You can depend on the SY26C to get the job done right and on time.

Standard AUX hydraulics

The SY26C comes standard with auxiliary hydraulic lines plumbed down to the arm tip providing hydraulic power that is ready to use.

In-cab color monitor

Intuitive, quick communication of key operating parameters. Ability to easily see information about machine set-up and performance.

Reliable first-class components

Guarantee the easiest and most versatile operation in every working environment.

Undercarriage components

High quality and durable undercarriage for long life and resistance to wear.

Optimized cabin

For excellent visibility and maximum operator comfort and control.

Work harder, more efficiently, and longer

Equipped with a powerful and efficient Yanmar 3TNV80F. Tier 4f engine with a highly engineered hydraulic system to match engine response.

Outstanding durability

X-beam design uses a high strength box-section structure for maximum durability and excellent torsionresistant performance.

Swing boom

Allows the operator to move the boom 61 deg to the left and 49 deg to the right for operation in tight conditions and minimize ground disturbance on the jobsite.



Dozer blade

Equipped as a standard feature, so that backfilling and finishing operations can be performed easily and efficiently.

Simplified service

A key tool for more uptime and reduced cost. Ground level service items aid in quick and easy maintenance.

Complete research & development and test system

SANY has established complete machine endurance test center with full functions. Each model of excavator must be subjected to over 2,000h field excavating test.

Key components like working device, cab and hydraulic components etc., must be subject to fatigue test over 800,000 times.



Advanced manufacturing technology

SANY has RGV assembling line and full automatic welding robots, and possesses high precision machining equipment and precise machining center.

SANY's manufacturing and assembling lines won five-star national site in 2013 and national quality award in 2014. In 2023, SANY Mini Excavator Factory was awarded as the intelligent factory.



Technical Specifications

Specification		Service refill capacities	
Model	3TNV80F-SPSY3	Fuel tank	34 L
Displacement (L)	1.267 L	Engine coolant	4.1 L
Engine power at rated engine speed	14.6 kW/2400 rpm (SAEJ1995)	Engine oil	1.6-3.4 L
Max. torque	63-67.3 N·m/1800 rpm	Swing drive	/Hydraulic self-lubrication
		Final drive (each side)	0.6 L
		Hydraulic oil tank	30 L

Hydraulic system			
Type	Load-sensitive system	Travel circuit	24.5 MPa
Type	Variable-capacity piston pumps	Swing circuit	19.6 MPa
Maximum flow	78 L/min	Heavy lift circuit	24.5 MPa
Hydraulic motors		Pilot circuit	3.5 MPa
Travel	2×axial piston motor with parking brake	Hydraulic cylinders	
Swing	1×axial piston motor with swing holding brake	Boom cylinder diameter x stroke	75×513 mm
Relief valve setting		Arm cylinder diameter x stroke	70×493 mm
Implement circuits	24.5 MPa	Bucket cylinder diameter x stroke	63×481 mm
		Shovel bucket cylinder diameter x stroke	85×125 mm
		Offset cylinder diameter x Distanc	75x357 mm

Table of lifting capacity

Blade on ground

B	A						MAX Reach			
	2.0 m		3.0 m		4.0 m				mm	
4.0 m	kg									
4.0 m	kg									
3.0 m	kg			*626	464			*525	360	3355
2.0 m	kg			*693	453			*481	278	3886
1.0 m	kg	*1583	800	*885	414	*698	270	*497	252	4052
0 m	kg	*1858	752	*1017	392			*571	259	3910
-1.0 m	kg	*1619	757	*931	390			*720	311	3411
-2.0 m	kg	*751	*751					*587	*587	2235

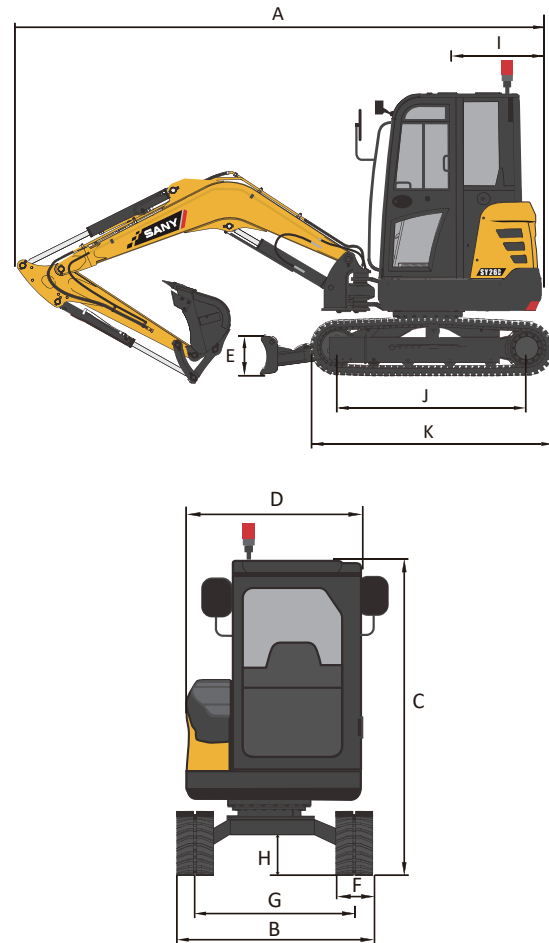
- This capability is calculated according to GB/T 13331, ISO10567 and SAE J1097 standards. The limiting coefficient of the hydraulic system is 0.87, and the tipping coefficient is 0.75.
- Marked with * is limited by hydraulic pressure, marked without "is limited by stability.
- The lifting point is the support hole in front of the bucket rod (excluding the weight of the bucket). If there are additional accessories such as buckets, they should be deducted from the above lifting weight.
- A- Radius of loading point (m); B- Loading point height (m).

Blade above ground

B	A						MAX Reach			
	2.0 m		3.0 m		4.0 m				mm	
4.0 m	kg									
4.0 m	kg									
3.0 m	kg			534	464			387	360	3355
2.0 m	kg			461	453			302	278	3886
1.0 m	kg	812	800	435	414	275	270	276	252	4052
0 m	kg	768	752	416	392			286	259	3910
-1.0 m	kg	772	757	413	390			348	311	3411
-2.0 m	kg	*751	*751					*587	*587	2235

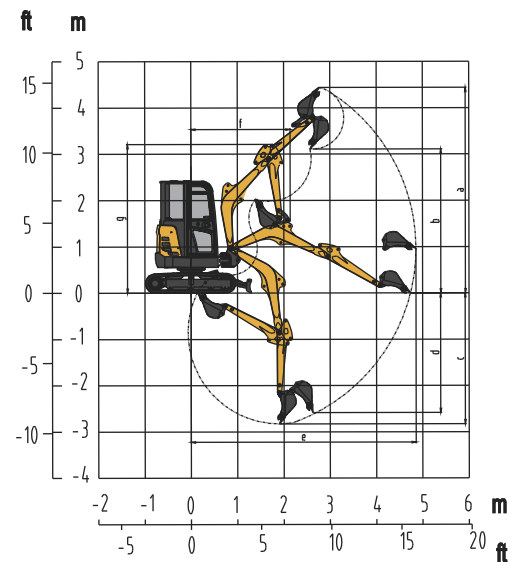
- This capability is calculated according to GB/T 13331, ISO10567 and SAE J1097 standards. The limiting coefficient of the hydraulic system is 0.87, and the tipping coefficient is 0.75.
- Marked with * is limited by hydraulic pressure, marked without "is limited by stability.
- The lifting point is the support hole in front of the bucket rod (excluding the weight of the bucket). If there are additional accessories such as buckets, they should be deducted from the above lifting weight.
- A- Radius of loading point (m); B- Loading point height (m).

Machine dimensions



Overall dimensions(mm)	SY26C
Boom Length	2100
Stick (Arm) Length	1300
A. Transport Length	4160
B. Transport Width	1550
C. Transport Height	2430
D. Upper Structure Width	1375
E. Shovel Bucket Height	300
F. Track Width (standard shoe)	300
G. Track Gauge	1250
H. Ground Clearance (minimum)	290
I. Tail Gyration Radius	915
J. Grounding Length of Track	1560
K. Track Length	2005

Operation range(mm)	SY26C
Boom Length	2100
Stick (Arm) Length	1300
a. Maximum Digging Height	4405
b. Maximum Dumping Height	3130
c. Maximum Digging Depth	2810
d. Maximum Vertical Wall Digging Depth	2210
e. Maximum Reach at Ground Level	4710
f. Minimum Gyration Radius	1985



Technical specifications

Operating Weight	2775 kg
Ground Pressure	26 kPa
Engine	3TNY80F-SPSY3
Displacement	1.267L
Gross Power	14.6 kW
Hydraulics	Load Sensing with Pilot Control
Main Hydraulic Pump	Axial Piston – Variable Displacement
Operating Flow (maximum)	78.0 L/min
Operating Pressure (maximum)	24.5 MPa
Auxiliary Flow (maximum)	42.5 L/min
Auxiliary Pressure	15/17.5 MPa
Travel Motor	Axial Piston with Park Brake
Travel Pressure	24.5 MPa
Travel Speeds	4.5 / 2.6 km/hr
Travel Effort	23.0 kN
Grade Capability (maximum)	30°
Swing Motor	Axial Piston with Swing Brake
Swing Pressure	19.6 MPa
Swing Speed	10 rpm
Undercarriage (standard)	Belted Rubber Track
Track Shoe Width (standard)	300 mm
Track Rollers (per side)	4
Carrier Rollers (per side)	1

The operating weight includes a 75 kg operator, excluding the bucket.

