

Stone and sorting grab SK02-SK30

engcon[®]

SK02, SK05, SK10, SK15, SK20, SK30: For all excavators in the 1,5-33 tonne weight classes

- The grab's claws are fitted with reversible wear bars
- Load-holding check valve and pressure accumulator retain gripping force in the event of loss of machine pressure
- Complies with European safety standards
- Expander bushings in major joints
- Swedish design for excellent geometry and problem-free operation
- Bolt-on bracket/mounting makes switching brackets easy

SK02 | SK05 | SK10 | SK15 | SK20 | SK30



**EC-Oil™
READY**



SK15 with
EC-Oil connection

Accessories

Tooth kit

Closed sides

EC-Oil automatic hydraulic connector



SK20 with teeth
(accessory)

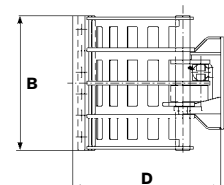
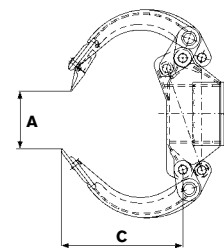


SK20 with closed sides
(accessory)

Specifications

Model	SK02	SK05	SK10	SK15	SK20	SK30
Grab width A: (max mm)	750	1,110	1,660	1,790	1,990	2,575
Grab width A: (min. mm)	0	0	0	0	0	0
Cutting width B: (mm)	400	505	715	860	860	1,170
Jaw length C: (mm)	490	460	680	790	870	1,180
Height D: (mm)	550	580	790	960	1,070	1,360
Gripping force: (kN)	5,7	8,7	15	19	25	45
Pressure: (MPa)	21	21	21	21	21	21
Weight: (kg)	109	180	325	540	620	1,195
Base machine weight: (t)	1,5-3	3-6	6-12	12-16	16-22	22-33

Supplied with or without upper hitch, or with rotator depending on the customer's requirements.



TOOL SYSTEMS FOR INCREASED PROFITABILITY

engcon UK Ltd. 200B Ashchurch Business Centre, Tewkesbury, GL20 8TD | Phone +44 (0)1684 297 168

E-mail uk@engcon.com | Web www.engcon.com